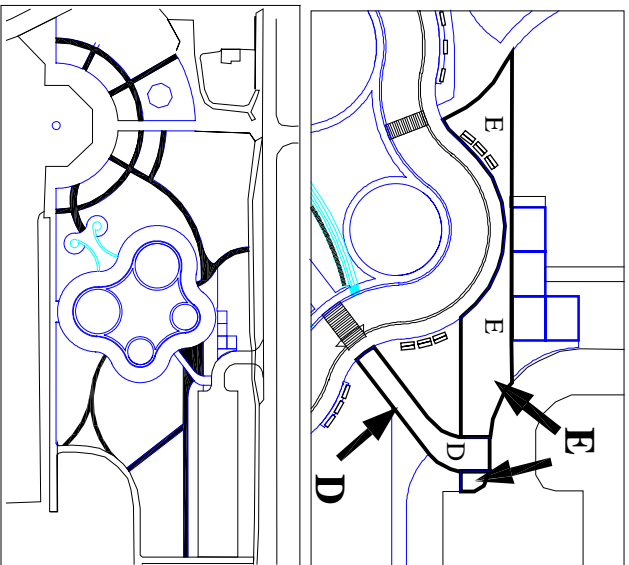


## ITEMS AVAILABLE TO INDIVIDUALS

**Location of**  
**D and E**  
 paving stone areas

**F and G-a**  
 paving stone areas (solid)

**Placement:** All donor paving stones are randomly placed within the designated areas. Specific placement within may be purchased at \$150.



## ITEMS OPEN TO INDIVIDUALS, ORGANIZATIONS, BUSINESSES AND CORPORATIONS

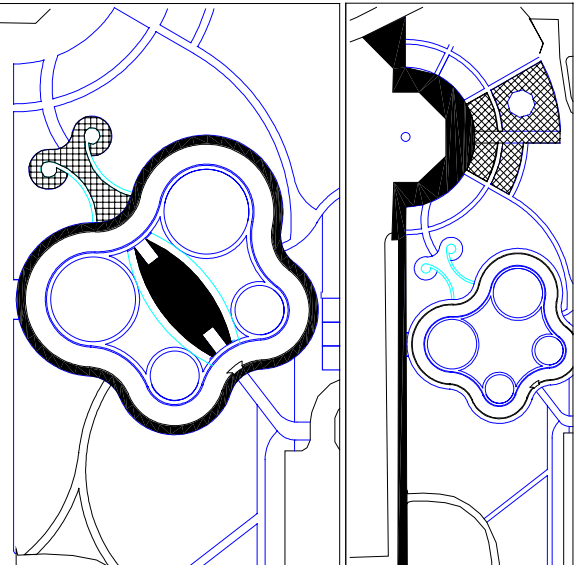
**Location of**  
**G-w**  
 paving stone areas (solid)

**G-m and H** paving stone areas (hatched)

**A and B**  
 rubber paver areas (solid)

**C**  
 paving stone areas (hatched)

**Placement:** All donor paving stones and rubber pavers are randomly placed within the designated areas. Specific placement within may be purchased at twice the donor price

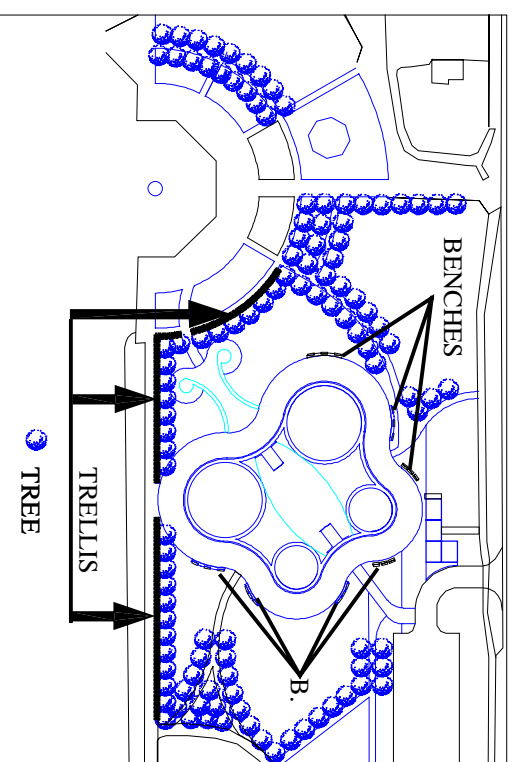


## ITEMS OPEN TO INDIVIDUALS, ORGANIZATIONS, BUSINESSES AND CORPORATIONS

**Location of trees, benches and trellis** including seating

- Note: 27 benches have been placed around the Butterfly. The location of the remaining benches has yet to be determined

**Placement:** All donor items are randomly placed within the designated areas. Specific placement may be purchased at twice the donor price



## SPECIALTY ITEMS - OPEN BID PROCESS

QUANTITY	MIN. BID PRICE	SPECIALTY ITEMS
1	\$10,000	Formal Garden - Semi-Circle East Bottom
2	\$10,000	Formal Gardens - Semi-Circle West
2	\$20,000	Centre Butterfly Gardens
1	\$20,000	Inside Small Formal Garden
2	\$30,000	Small Circular Butterfly Gardens
1	\$35,000	Formal Garden - Semi-Circle East Top
1	\$40,000	Small General Garden (butterfly habitat)
2	\$50,000	Large Circular Butterfly Gardens
1	\$50,000	Inside Large Formal Garden
1	\$50,000	Lake Fountain
1	\$50,000	Zanboni
1	\$75,000	Large General Garden (butterfly habitat)
2	\$100,000	Butterfly Antennae Fountains
1	\$175,000	Interpretive Centre & Facilities Building
1	\$200,000	Gazebo
2	\$250,000	Waterfall Structures

please see the FUND RAISING PROGRAM GUIDE for further details available at the Bromie Butterfly office or visit the web site

