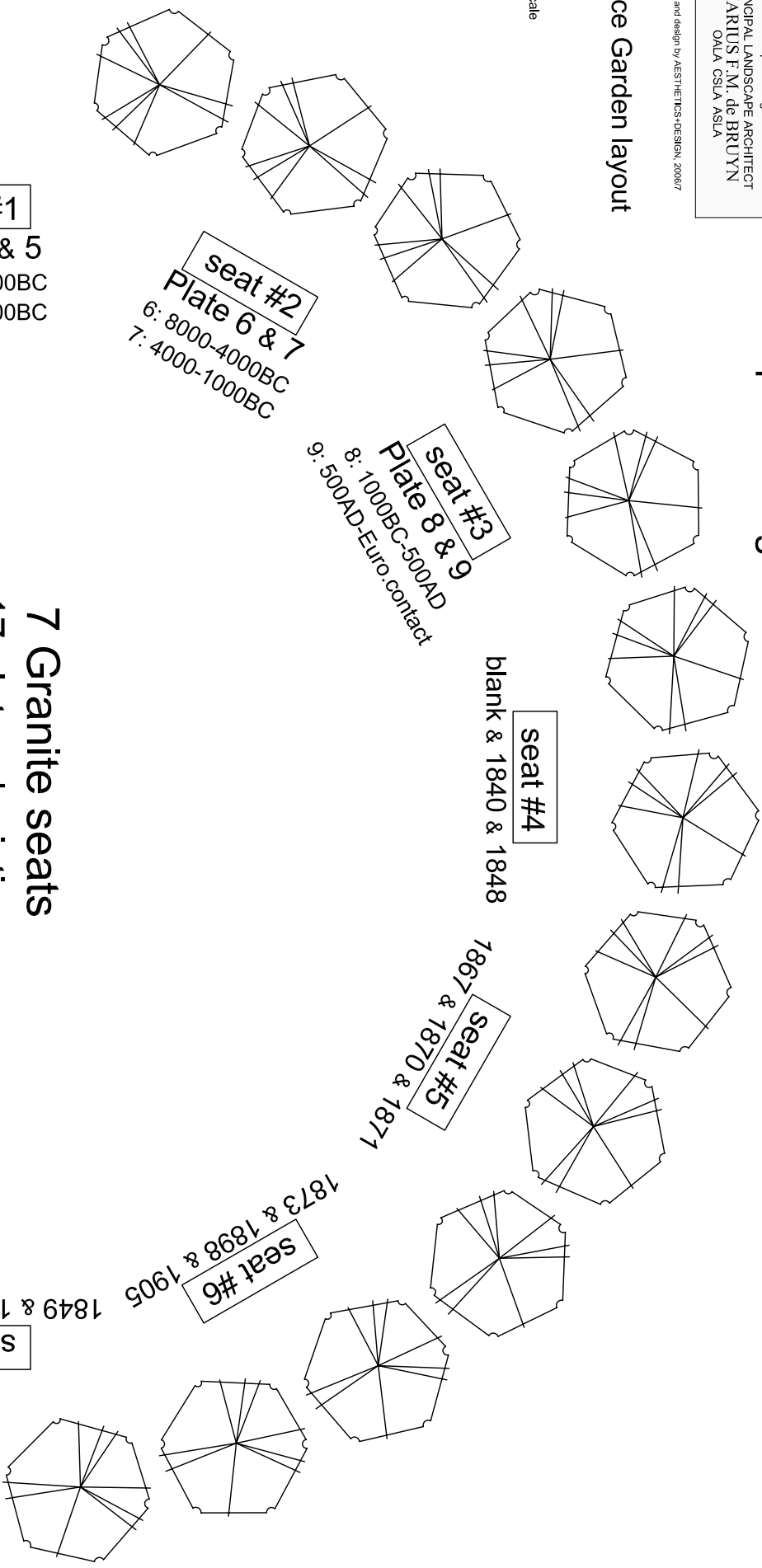


Peace Garden layout



13 Nannyberries representing the current 10 Provinces and 3 Territories



seat #1

Plate 2 & 5
2: 9500-8200BC
5: 8500-6000BC

seat #2

Plate 6 & 7
6: 8000-4000BC
7: 4000-1000BC

seat #3

Plate 8 & 9
8: 1000BC-500AD
9: 500AD-Euro.contact

seat #4

blank & 1840 & 1848

Seat #5

1867 & 1870 & 1871

Seat #6

1873 & 1898 & 1905

seat #7

1849 & 1899 & Canada

7 Granite seats
17 plates depicting
Canada's cultural and political history
from 9500BC to the present

Peace Garden plates

scale: 1:5

graphic seat and design by AESTHETICS+DESIGN, 2006/7
research by Sunningdale staff & volunteers, 2006

***Reference:**

Historical atlas of Canada / Geoffrey J. Matthews
Toronto University Press, 1987-1993
Volume 1, From the beginning to 1800
ISBN 0802024955
(kept at Oakville Central Library, Navy Street - Atlas Stand)

 coastal outline
 areas of population/archeological evidence (rough surface)

SEAT #1

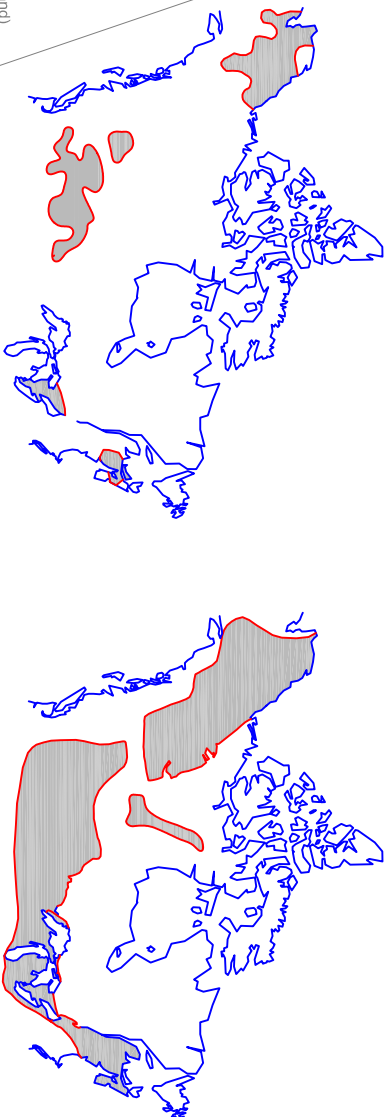


Plate 2*

The Fluted Point People 9500-8200 BC

(archeological evidence areas were grouped)

Plate 5*

The Plano People 8500-6000 BC

SEAT #2

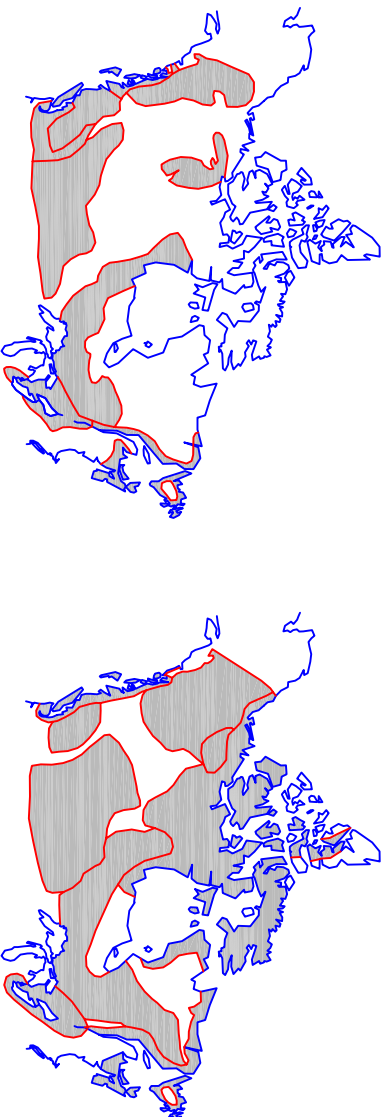


Plate 6*

cultural sequences 8000-4000 BC

Plate 7*

cultural sequences 4000-1000 BC

AESTHETICS
+
DESIGN

LANDSCAPE ARCHITECTS
905.842.3351
aesthetics@plus-design.com
www.plus-design.com
PRINCIPAL LANDSCAPE ARCHITECT
MARIUS F.M. DE BRUYN
OMLA CSLA ASLA

Peace Garden plates

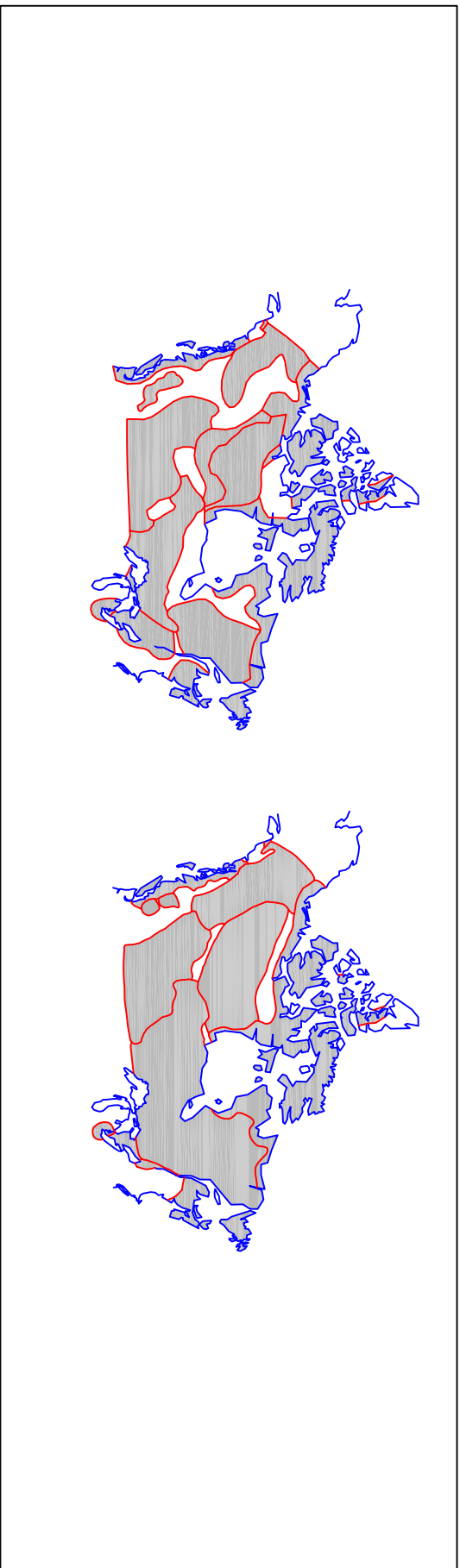
scale: 1:5

graphic seat and design by AESTHETICS+DESIGN, 2006/7
research by Sunningdale staff & volunteers, 2006

***Reference:**

Historical atlas of Canada / Geoffrey J. Matthews
Toronto University Press, 1987-1993
Volume 1, From the beginning to 1800
ISBN 0802024955
(kept at Oakville Central Library, Navy Street - Atlas Stand)

— coastal outline
▨ areas of population/archeological evidence (rough surface)



SEAT #3

Plate 8*

cultural sequences 1000 BC - 500 AD

Plate 9*

cultural sequences 500 AD - European Contact

AESTHETICS
+
DESIGN

LANDSCAPE ARCHITECTS
905.842.3351
aesthetics@plus-design.com
www.plus-design.com
PRINCIPAL LANDSCAPE ARCHITECT
MARIUS F. M. DE BRUYN
OLGA CSUA, ASLA

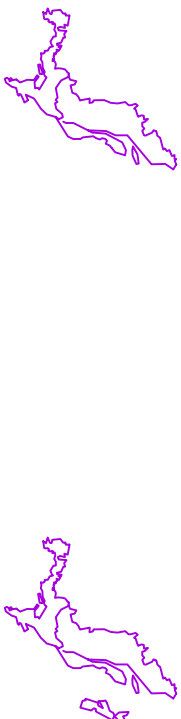
Peace Garden plates

scale: 1:5

graphic seat and design by AESTHETICS+DESIGN, 2009/7
research by Sunningdale staff & volunteers, 2009

**Various sources
political outline

SEAT #4



intentionally left blank

1840**

1848**

SEAT #5



1867**

1870**

1871**

**AESTHETICS
+
DESIGN**

LANDSCAPE ARCHITECTS
905.842.3351
aesthetics@plus-design.com
www.plus-design.com
PRINCIPAL LANDSCAPE ARCHITECT
MARIUSZ M. DE BRUYN
OMLA CSLA ASLA

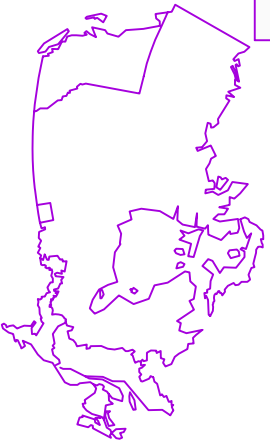
Peace Garden plates

scale: 1:5

graphic seal and design by AESTHETICS+DESIGN, 2009/7
research by Sunningdale staff & volunteers, 2009

**Various sources
political outline

SEAT #6



1873**



1898**



1905**

SEAT #7



1949**



1999**



Canada**