

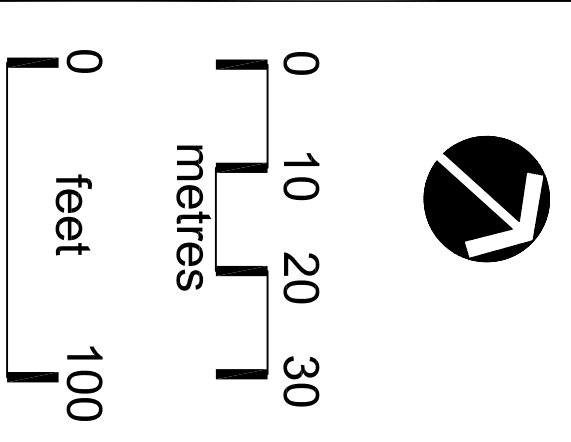
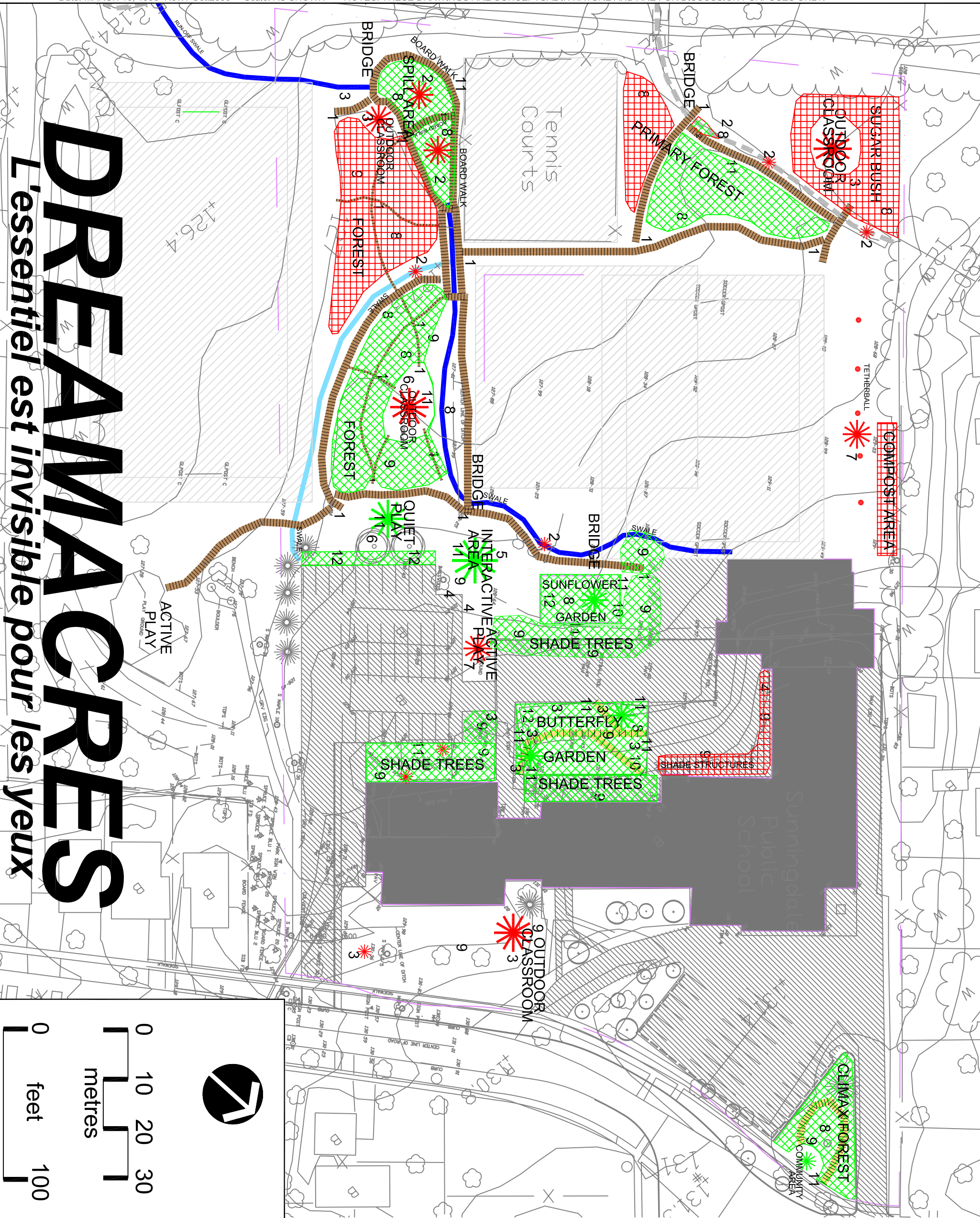
# CONCEPTUAL MASTER PLAN

## SUNNINGDALE SCHOOL NATURALIZATION PROJECT

WEB: plus-design.com/sunningdale BY: the SUNNINGDALE SCHOOL COMMUNITY, THE EVERGREEN FOUNDATION and AESTHETICS+DESIGN landscape architects  
 Date: MARCH 10, 1998 Rev.1 Oct.2006 Scale: AS SHOWN NOTES: THESE DRAWINGS ARE CONCEPTUAL IN NATURE AND ARE FOR DISCUSSION PURPOSES ONLY.

# DREAMSCAPES

L'essentiel est invisible pour les yeux



- ### PROJECT UPDATES
- as of October, 2006
- 1997 SITE INVENTORY
  - 1997 PROJECT VISIONING (conceptualization)
  - 1997 SUNFLOWER GARDEN
  - 1998 CONCEPTUAL MASTER PLAN
  - 1998 HALTON REGION
  - \* ENVIRONMENTAL LEADERSHIP AWARD
  - 1998 PHASE I
  - CLIMAX FOREST - tree planting
  - VEGETABLE GARDEN
  - 1998 PROJECT NAMING: DREAMSCAPES
  - 1998 PHASE II: PRIMARY FOREST
  - 1998 PHASE I: CLIMAX FOREST - understory preparation
  - 1999 HALTON DISTRICT SCHOOL BOARD
  - \* AWARD OF DISTINCTION
  - 1999 PHASE I: CLIMAX FOREST
  - understory perennial planting commences
  - 2000 PHASE I: CLIMAX FOREST - completed
  - 2001 ONTARIO ASSOCIATION OF LANDSCAPE ARCHITECTS
  - \* SERVICE TO THE ENVIRONMENT AWARD
  - 2001 PHASE III: NATIVE BUTTERFLY GARDEN - first commences
  - 2002 PHASE III: NATIVE BUTTERFLY GARDEN - completed
  - 2003 PHASE IV: 14 SHADE TREES PLANTED
  - 2004 1st DREAMSCAPES FESTIVAL
  - 2005 PHASE V: STORMWATER MANAGEMENT WORK

- ### LEGEND
- EXISTING SCHOOL BUILDING
  - EXISTING OPEN SPACE - EXCLUDED
  - EXISTING ASPHALT
  - EXISTING SWALE
  - PROPOSED SWALES
  - COMPLETED SWALES
  - PROPOSED AMENITY AREAS
  - COMPLETED AMENITY AREAS
  - PROPOSED PATHS, TRAILS
  - COMPLETED PATHS, TRAILS
  - PROPOSED PROJECT AREAS
  - COMPLETED PROJECT AREAS

- ### VISIONING AREAS
- 1- PATHS, TRAILS
  - 2- PONDS, WETLANDS
  - 3- ROCKS
  - 4- BUSHES, VINES
  - 5- INTERACTIVE
  - 6- QUIET PLAY
  - 7- ACTIVE PLAY
  - 8- WILDLIFE
  - 9- SHADY SPACES
  - 10- FLOWER GARDENS
  - 11- SITTING AREAS
  - 12- VEGETABLE GARDENS

**AESTHETICS**  
+  
**DESIGN**

LANDSCAPE ARCHITECTS

905.842.3351  
aesthetics@plus-design.com  
www.plus-design.com

PRINCIPAL LANDSCAPE ARCHITECT  
**MARIUS F.M. de BRUYN**  
OALA CSLA ASLA